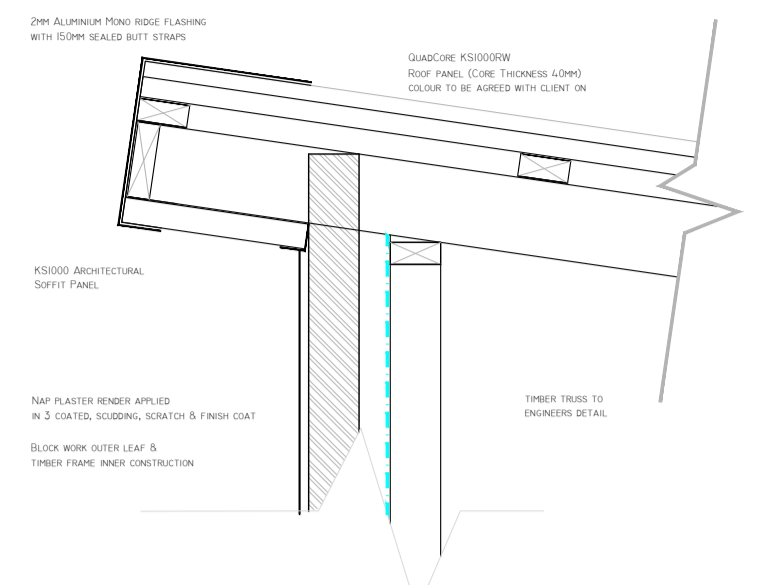
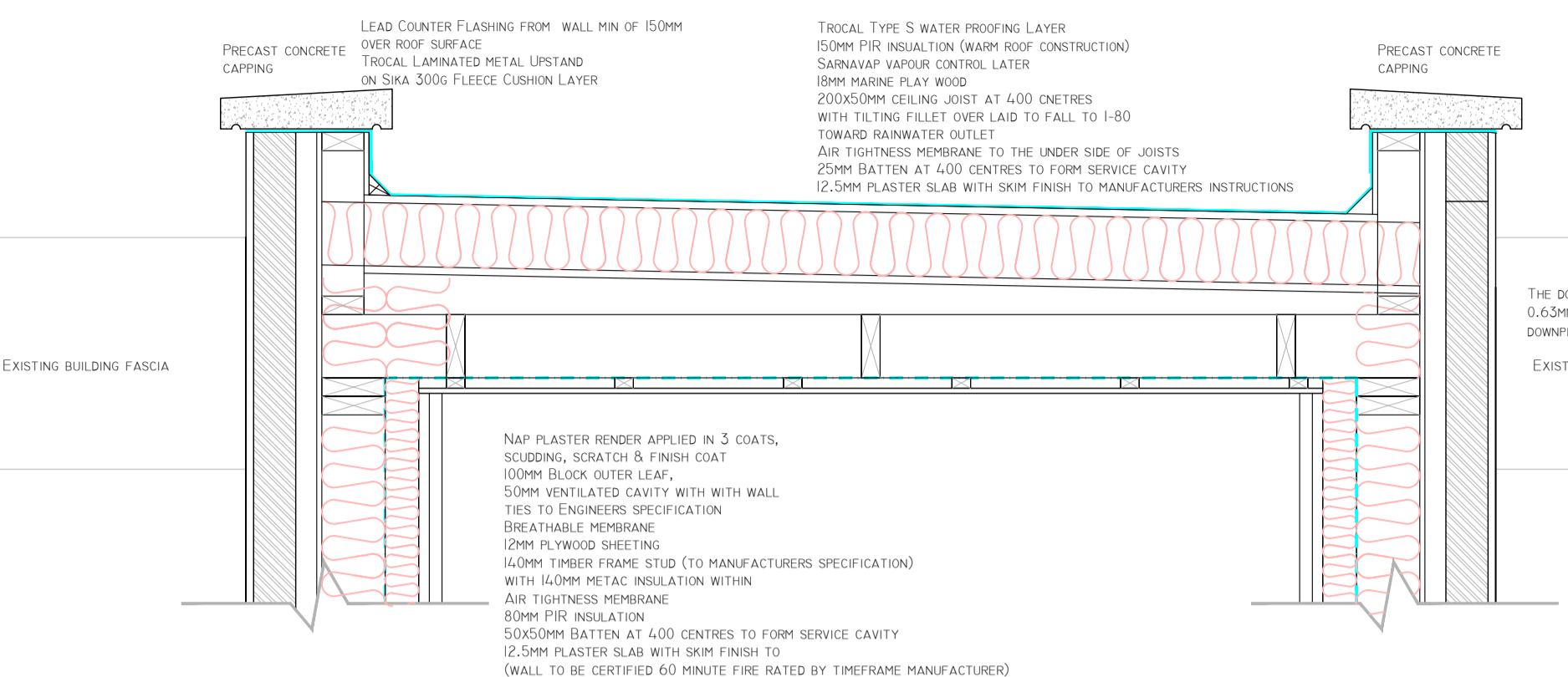


- NOTE :
- 1: ALL WORKS TO BE CARRIED OUT IN STRICT ACCORDANCE WITH CURRENT BUILDING REGULATIONS, LATEST EDITION AND IN ACCORDANCE WITH SPECIFICATION.
 - 2: CONTRACTOR SHALL NOTIFY THE ARCHITECT OF ANY DISCREPANCIES ON THIS DRAWING BEFORE CARRING OUT ANY WORKS.
 - 3: ALL DIMENSIONS ARE TO FACE OF BLOCKWORK UNLESS NOTED OTHERWISE.
 4. AIRTIGHTNESS SEALING BY SPECIALIST CONTRACTOR. BUILDING CONTRACTOR TO LIAISE WITH SAME PRIOR TO CONSTRUCTION.

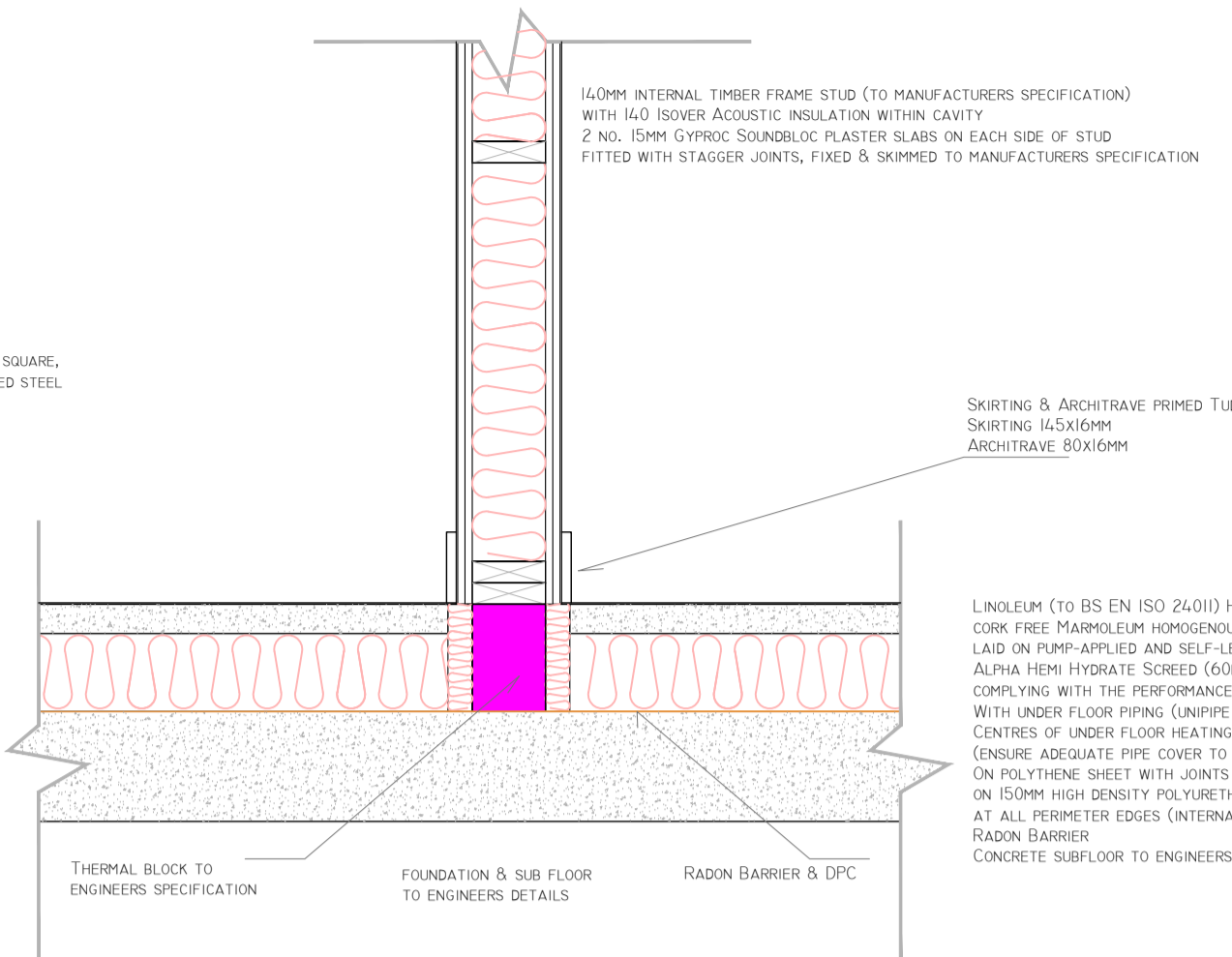
MONO PITCH EAVES DETAIL
SCALE 1:15



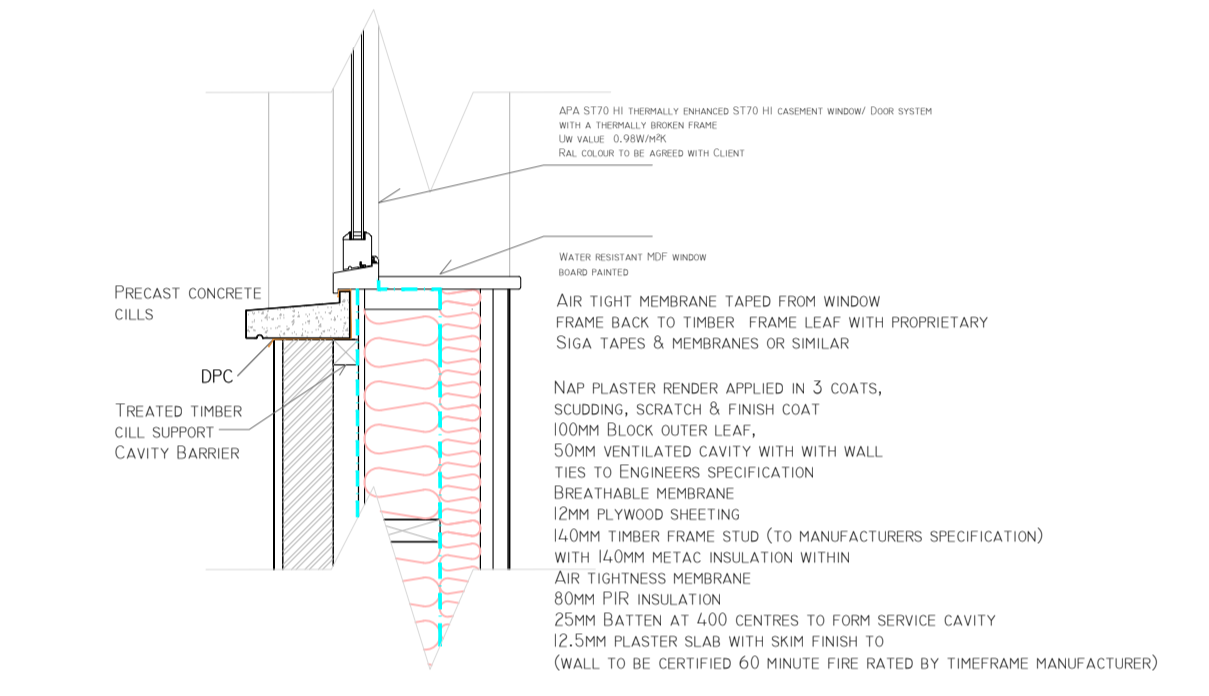
LINK FLAT ROOF DETAIL
SCALE 1:15



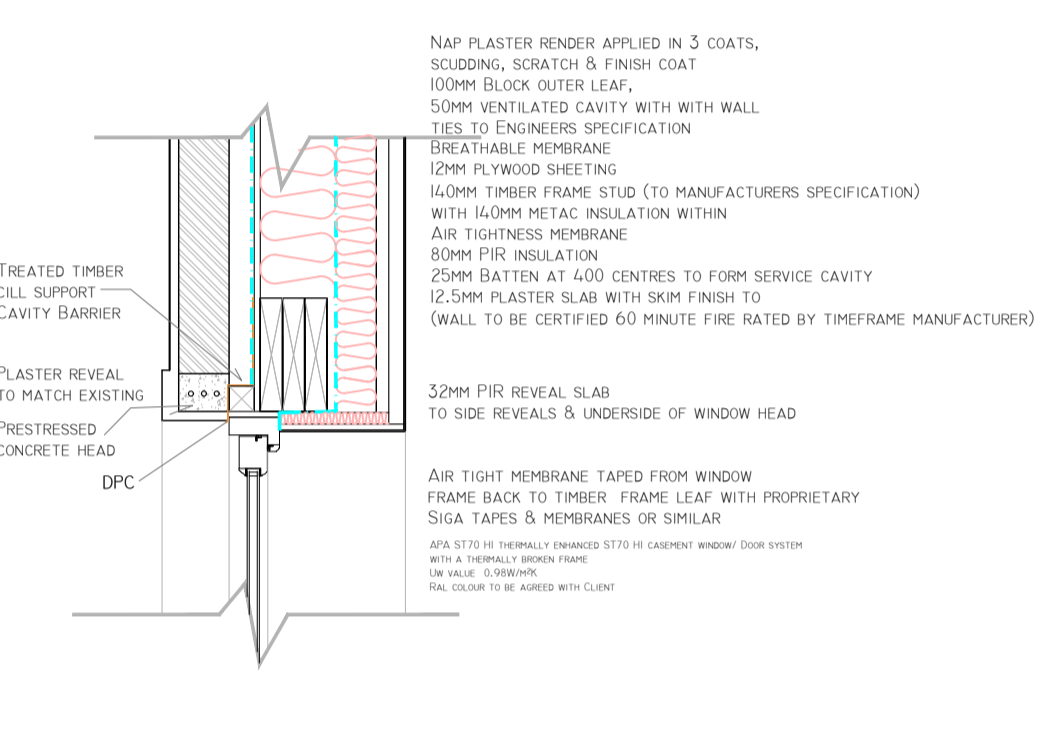
INTERNAL WALL DETAIL
SCALE 1:15



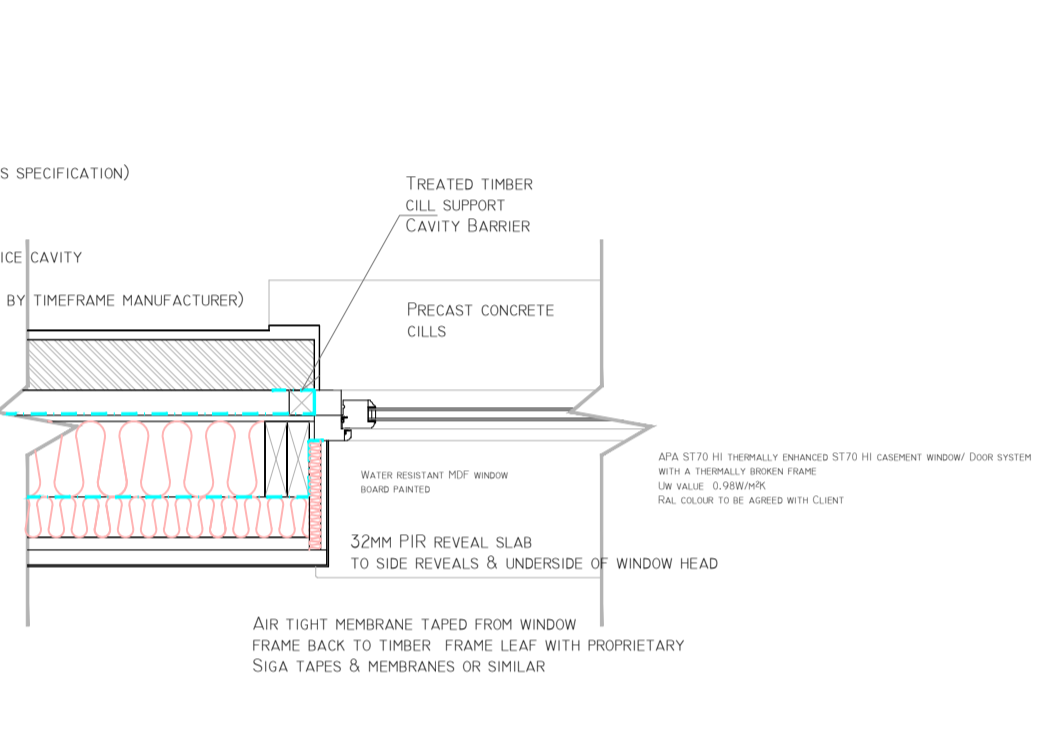
PROPOSED WINDOW CILL SECTION
SCALE 1:15



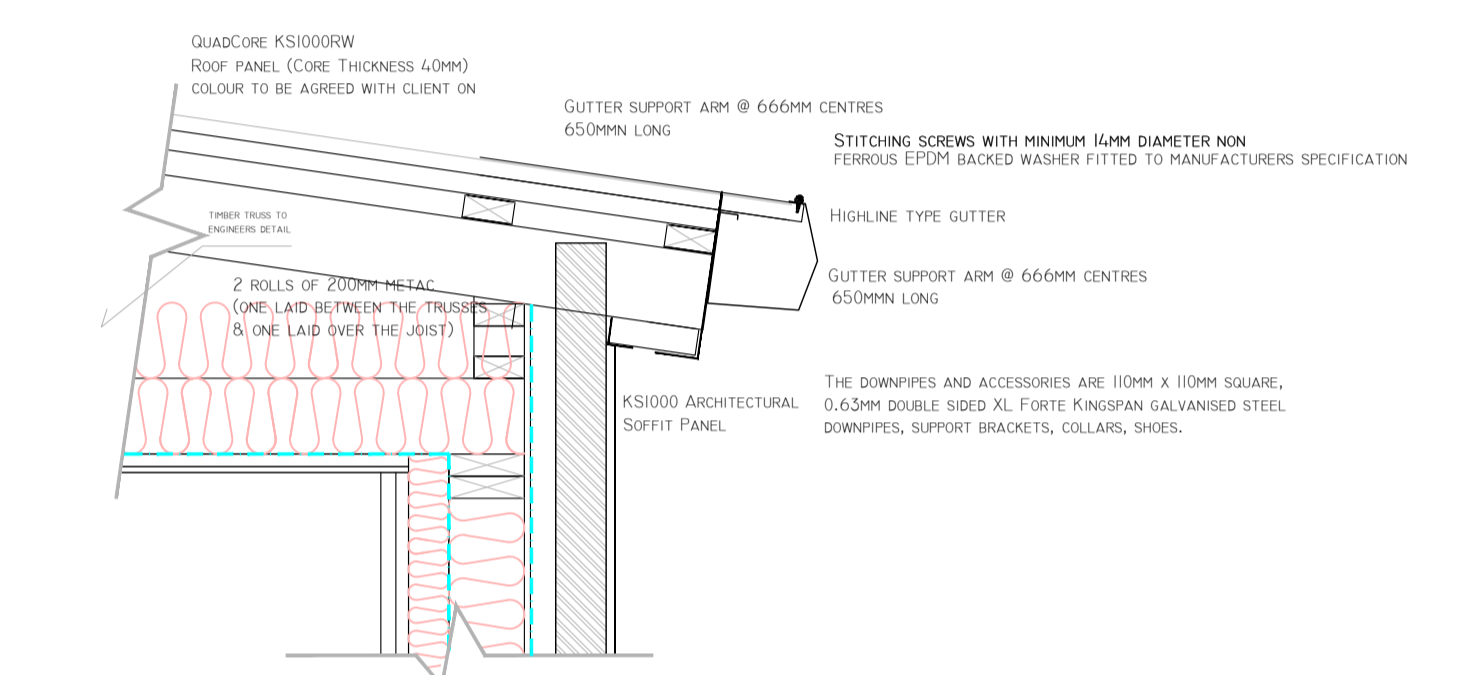
PROPOSED HEAD SECTION
SCALE 1:15 (OPES OF UP TO 1.8M)



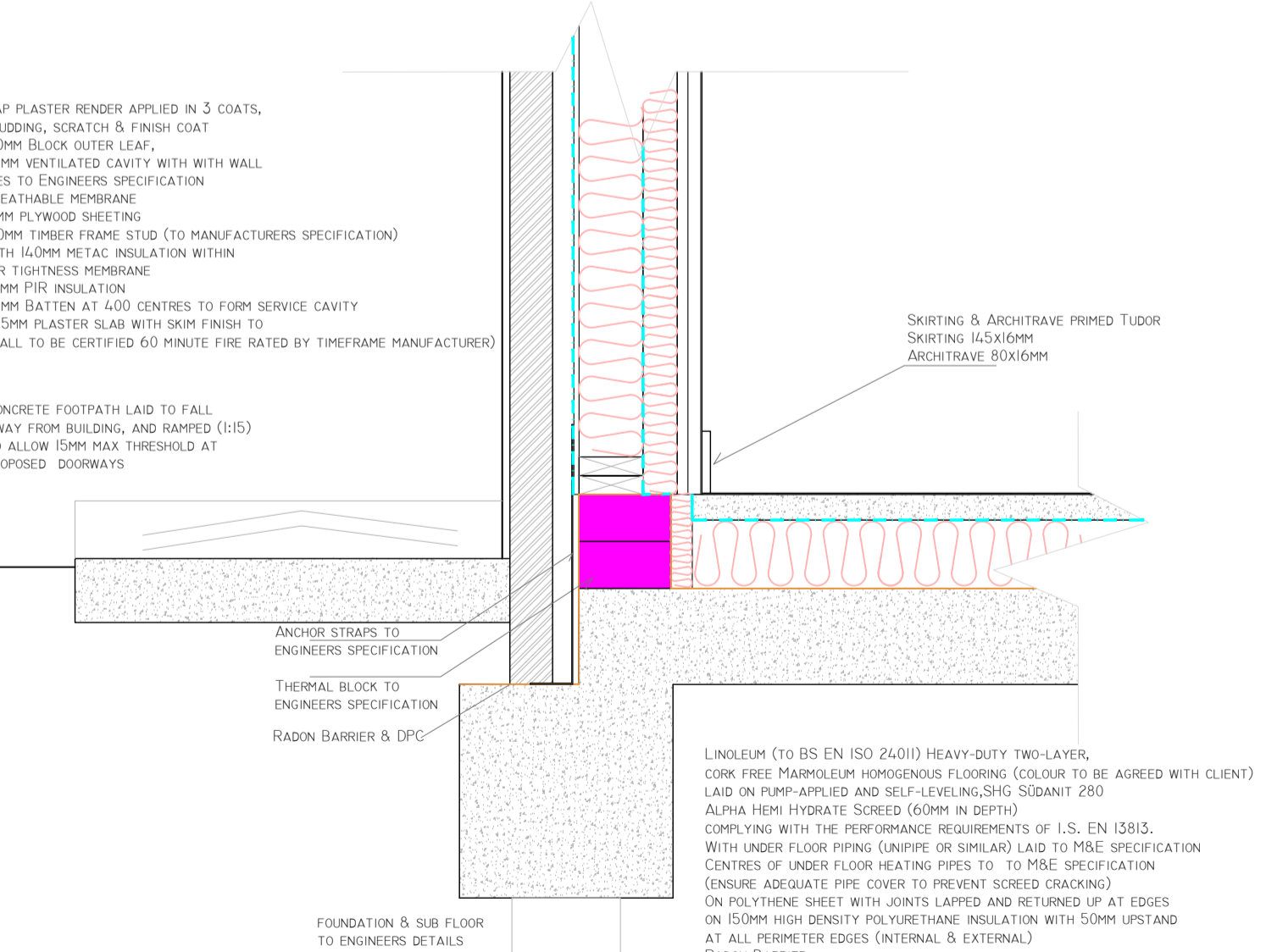
HORZ WINDOW SQUARE REVEAL
SCALE 1:15



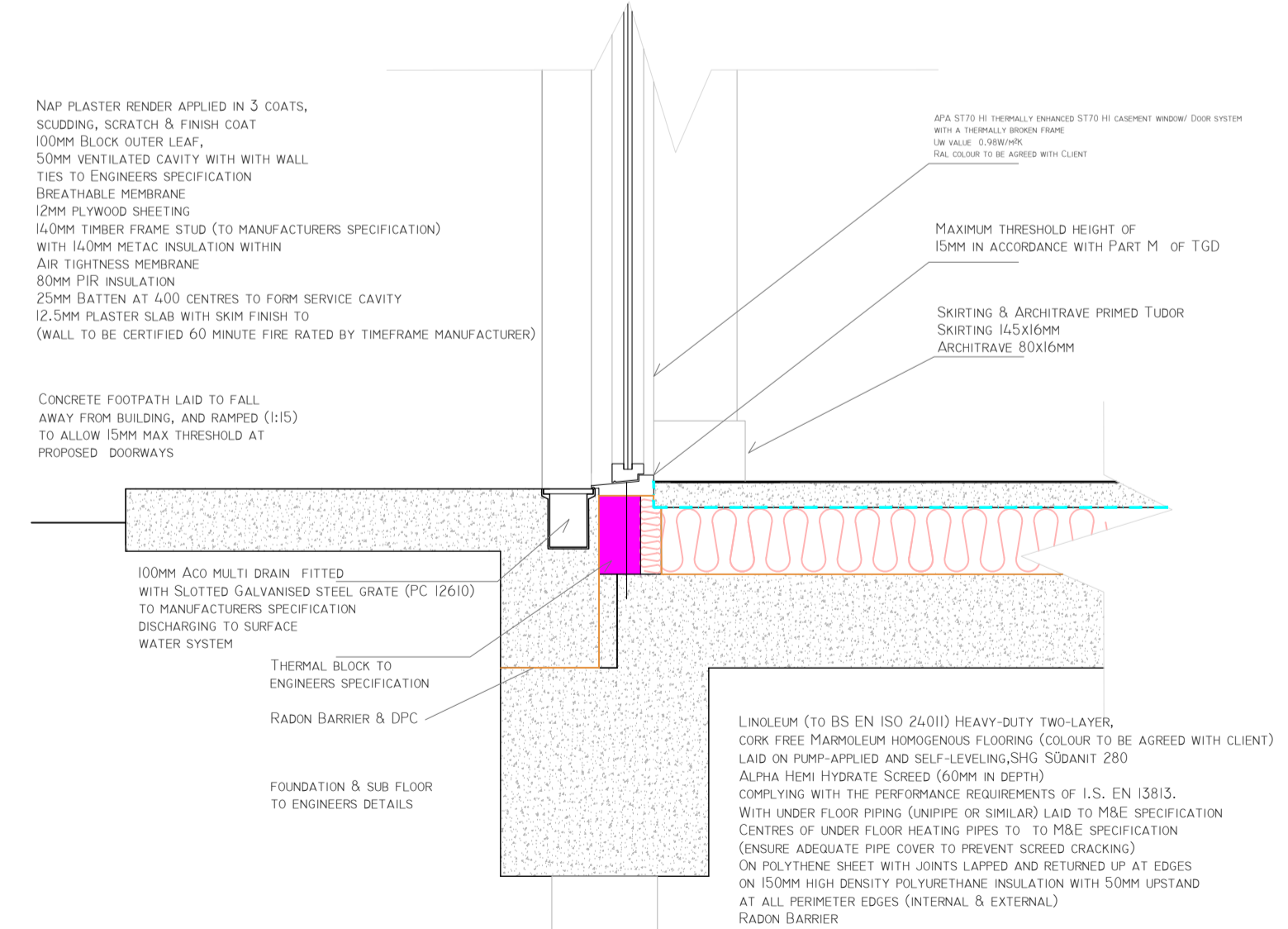
MONO PITCH GUTTER EAVES DETAIL
SCALE 1:15



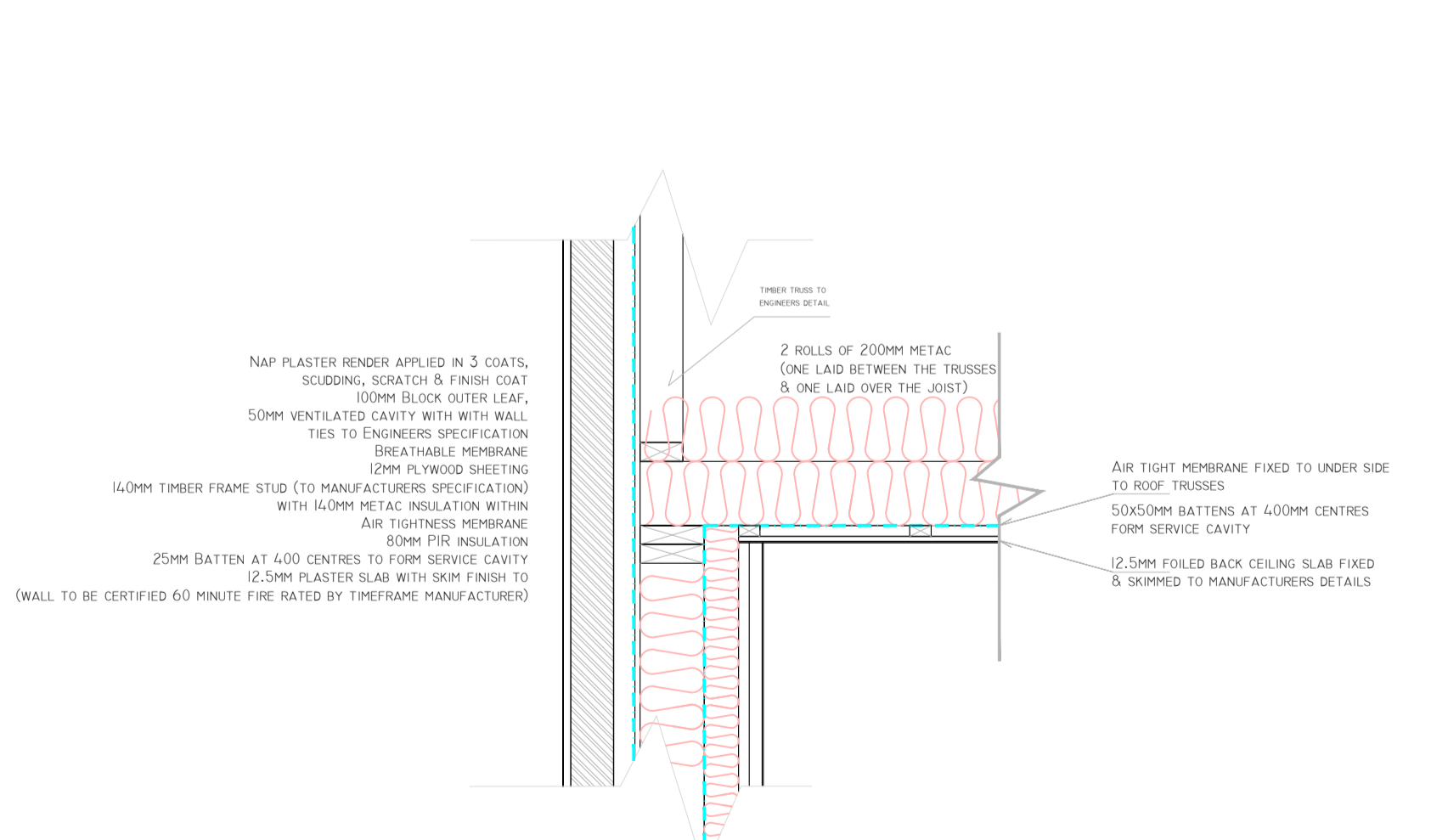
EXTERNAL FOUNDATION & WALL SECTION
SCALE 1:15



THRESHOLD SECTION
SCALE 1:15



CEILING SECTION
SCALE 1:15



O'LOUGHLIN ARCHITECTS LTD.

REVISION

NO.	REVISION/ISSUE	DATE

TENDER ISSUE

PROJECT
O'LOUGHLIN ARCHITECTS LTD.
REDHILLS HSE,
KILDARE,
CO. KILDARE
Mob. 087 9858836.
OLOUGHLINARCHITECTS@GMAIL.COM
CLIENT
ACDAL INTENDS TO CONSTRUCT A DEVELOPMENT AT BRIGHT SPARKS COMMUNITY CHILDCARE CENTRE COMPRISING OF A SINGLE STOREY REAR EXTENSION OF 2 NO. CLASSROOMS , ANCILLARY ACCOMMODATION, ASSOCIATED ALTERATIONS TO ALL ELEVATIONS AND ALL ASSOCIATED SITE WORKS.

TITLE
CONSTRUCTION DETAILS
DATE
JULY 2026
SCALE
1:15
DRAWING NO.
TN. 2783-09
DRAWN BY
T. O'LOUGHLIN